

THEHOUSE | **HOTEL & RESIDENCE ROYALE**

*Fouka
bay*

THEHOUSE | **HOTEL & RESIDENCE ROYALE**
RAS EL HEKMA



WELCOME TO

THE HOUSE | **HOTEL & RESIDENCE ROYALE**

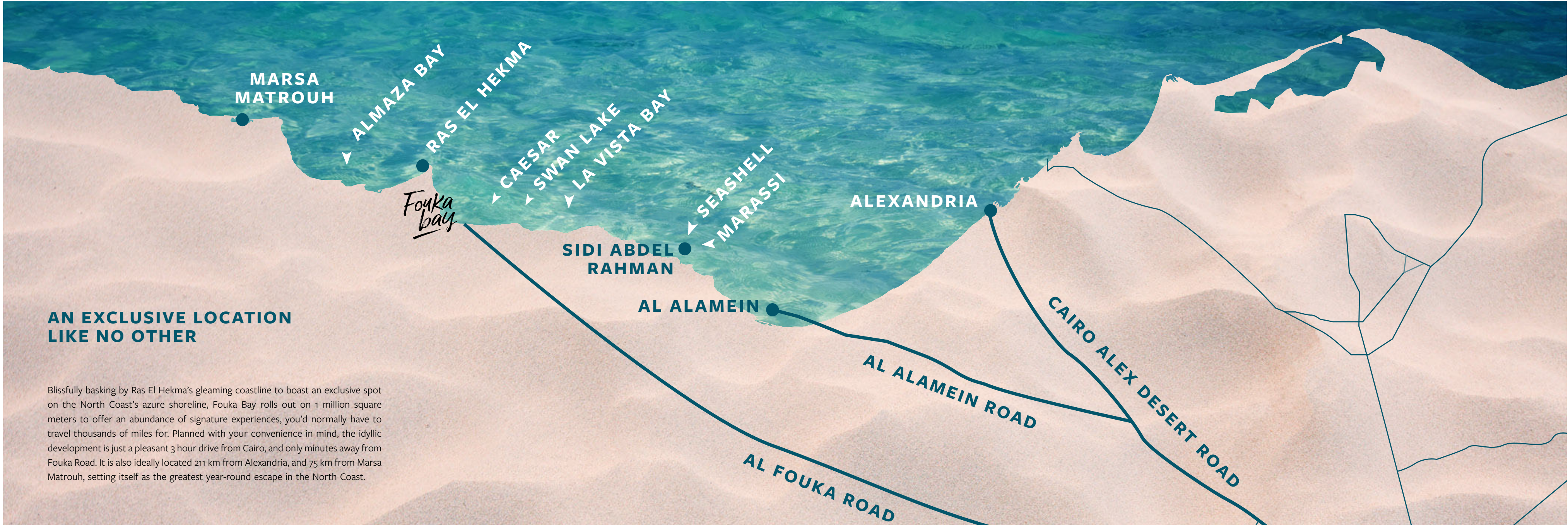
Grand, extravagant and more than a little dazzling, The House Hotel & Residence - Royale offers an authentic glimpse into a world of beachfront luxury and nostalgic architecture inspired by Egypt's golden era of the 20s and 30s. Nestled in sublime water surroundings in every direction, the enchanting amphitheater of sky and sea invites you to seize the finest in contemporary island life unfolding in opulence around the most exclusive spot in Fouka Bay with the closest proximity to the Mediterranean Sea. Take in captivating views of private pools and serene seascapes from the comfort of your own serviced apartment, as you experience royal treatment alongside friends and family in what is set to become Ras El Hekma's new gleaming jewel.

HEY, IT'S FOUKA BAY

Wake up to a joyous mosaic of 12 island clusters, beckoning paradise-surroundings; fringed by 7 km of white sandy beaches, and soaked in Crystal Lagoons® all around. Expertly conceived by Tatweer Misr and world renowned Italian architects Gianluca Peluffo and Partners, Fouka Bay is the place to socialize, relax and repose, as you experience a unique profusion of tropical island life. The development brings to fruition a special blend of beachfront simplicity, and true exclusivity, so that you can enjoy a front-row seat onto Ras El Hekma's virgin coastline.

Every aspect of Fouka Bay is crafted around relaxation, and enjoyment inviting the whole family to leave the pressures of city life behind and journey across floating landscapes anytime of the year.





MARSA MATROUH

ALMAZA BAY

RAS EL HEKMA

CAESAR

SWAN LAKE

LA VISTA BAY

SEASHELL

MARASSI

ALEXANDRIA

SIDI ABDEL RAHMAN

AL ALAMEIN

CAIRO ALEX DESERT ROAD

AL ALAMEIN ROAD

AL FOUKA ROAD

Fouka bay

AN EXCLUSIVE LOCATION LIKE NO OTHER

Blissfully basking by Ras El Hekma's gleaming coastline to boast an exclusive spot on the North Coast's azure shoreline, Fouka Bay rolls out on 1 million square meters to offer an abundance of signature experiences, you'd normally have to travel thousands of miles for. Planned with your convenience in mind, the idyllic development is just a pleasant 3 hour drive from Cairo, and only minutes away from Fouka Road. It is also ideally located 211 km from Alexandria, and 75 km from Marsa Matrouh, setting itself as the greatest year-round escape in the North Coast.

THE HOUSE HOTEL & RESIDENCE - ROYALE

SEAFRONT LUXURY

Nestled on an idyllic spot to invite the outdoors in, The House Hotel & Residence - Royale is an exclusive seafront enclave, delivering equal views of landscaped islands, shimmering pools and the Mediterranean's inescapable charm straight to every door. Your royal serviced apartment is surrounded by colorful flower beds lined by wooden benches and relaxing waterfalls, while enjoying direct access to linear and rooftop pool decks for tanning and unwinding.

Boasting a full complement of top-notch amenities spanning vast pools, a state-of-the-art spa, a cutting-edge gym, premium banquette facilities, a business hub and a private beach, The House Hotel & Residence - Royale offers everything you need to strike the perfect balance between home-style living and hotel hospitality. By partnering with world-renowned Kerten Hospitality, residents will feel pampered as they immerse themselves in worlds of sun-drenched activities, late-night entertainment and scrumptious culinary adventures, complimented by housekeeping services and round-the-clock concierge assistance, so they needn't worry about a thing.



MASTER PLAN

A WHOLE NEW LEVEL OF LUXURY LIVING

Tucked away in a tranquil yet strategic strip overlooking Fouka Bay's breathtaking coastline, The House Hotel & Residence - Royale introduces an innovative configuration, essential to invite tranquil nature and captivating seascapes into every corner of your serviced apartment. Master-planned on 3 different elevations, the hotel's leveled typology sets all units on varied inclinations angled at 30, 45 or 90 degrees to ensure unobscured waterfront views for every home type.

Designed to lend impressive space and flexibility for all unit types, all fully-furnished apartments enjoy ideal ventilation, ample sun-light and a grand aesthetic nature steeped in floating surroundings. Boasting private yet animated lush vistas that directly open onto a private beach, residents can enjoy top-notch dining and retail experiences perfected by breathtaking views.

THEHOUSE  HOTEL ROYALE
THEHOUSE  RESIDENCE ROYALE



THEHOUSE | HOTEL & RESIDENCE ROYALE
MASTER PLAN

THEHOUSE | HOTEL ROYALE
THEHOUSE | RESIDENCE ROYALE





EXTERIORS

INSPIRED EXTERIORS

Inspired by the masonry 'sails' translated by Paul Klee's painting 'Soul of Places', The House Hotel & Residence - Royale is the re-creation of an artful image that dialogues both with the sea through the metaphor of sailing and the soul of the place through recalling the light to express the laid-back style of living in North Africa's coast. A quick glance at the hotel's impressive exteriors consists of unexpected glimpses into noble perspectives and authentic touches, articulated in an inviting fan pattern, engulfing windows facing the sea. By infusing geometric ornamentation to adorn streamlined modern facades, the hotel's royal exteriors open up towards the Mediterranean to - metaphorically and literally - protect themselves from direct sunlight through small constellation holes, iconic to Fouka Bay while leaving visitors in a state-of-awe to discover more.



EXTERIOR



EXTERIOR



EXTERIOR



EXTERIOR



EXTERIOR



EXTERIOR



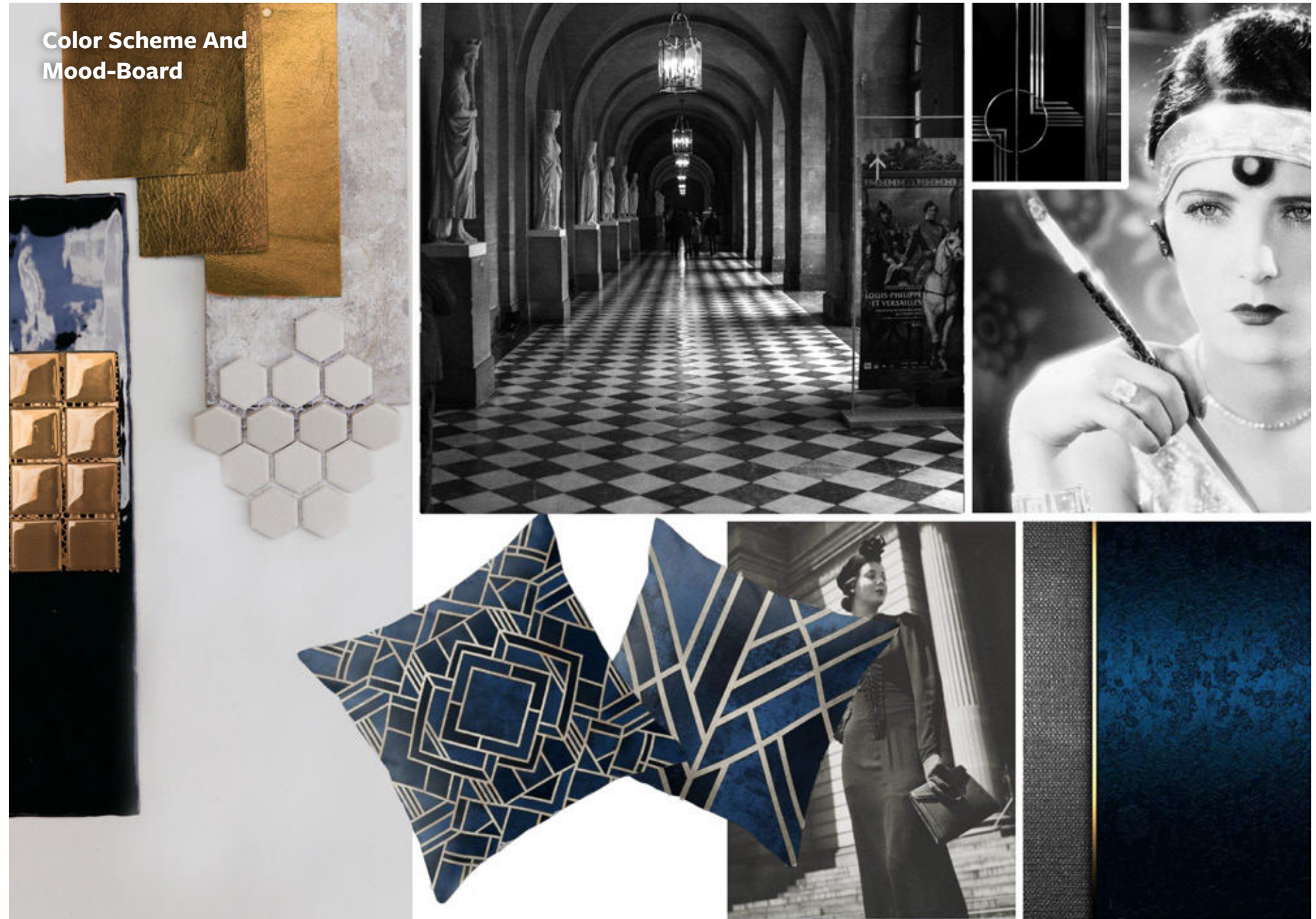


INTERIORS



ENCHANTING INTERIORS

Staying at The House Hotel & Residence - Royale is a free ticket to travel back in time and uncover Egypt's golden era and the distinct revival of its history reflected in a modern light. Designed by internationally acclaimed Mona Hussein to invite nature's gifts in through sweeping glass facades, the hotel features impressive graphic artworks of treasured Egyptian icons whispering enchanting stories from the 20 and 30s. Every corner of your life here is a timeless journey full of intrigue and nostalgic architecture riches, blending nature-inspired shades of blue with luxurious tints of gold in materials such as brass, tans and coppers to paint a timeless masterpiece of glamorous luxury waiting to be called home.



LOBBY



LOBBY



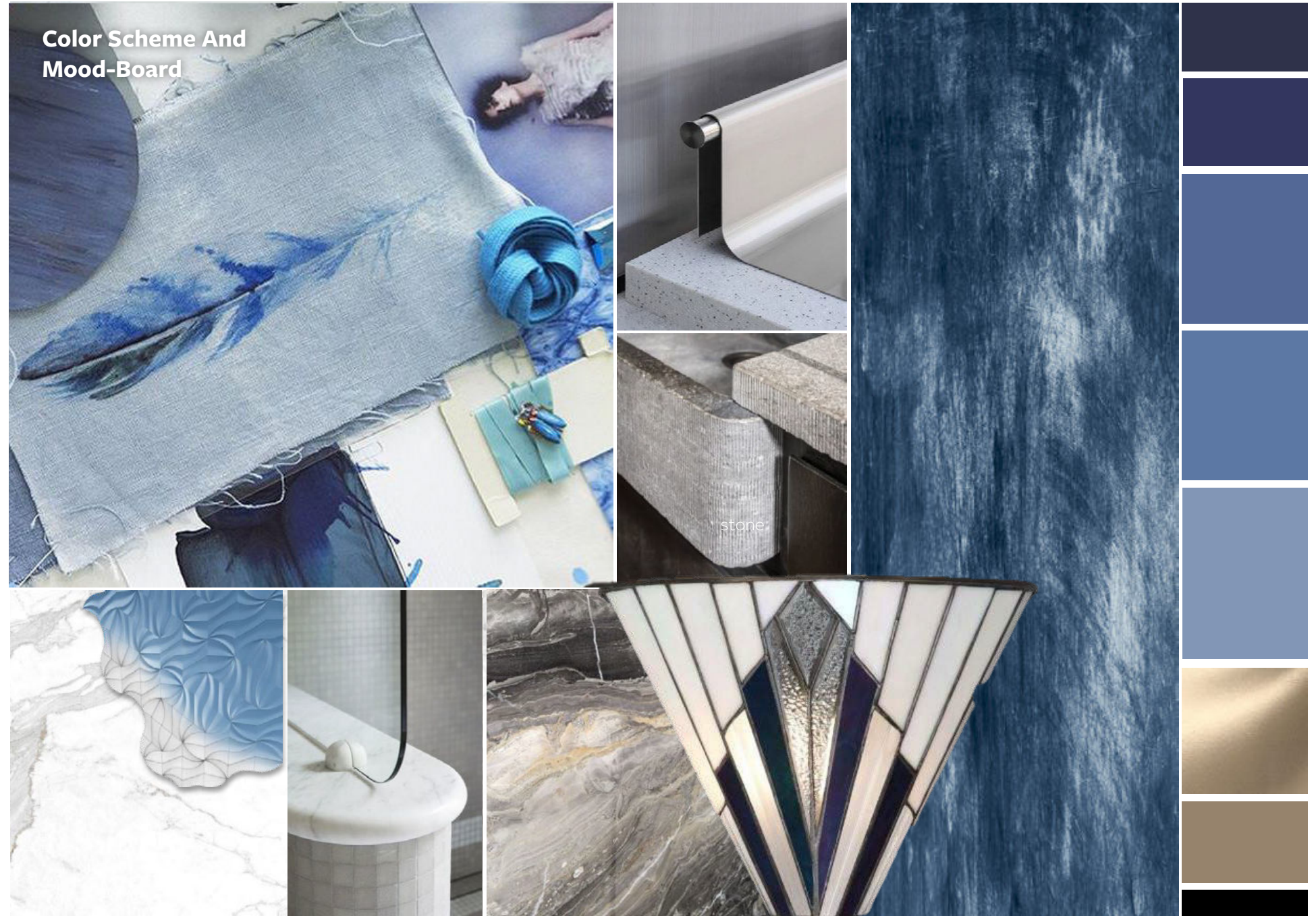
LOBBY





A TO Z FULLY EQUIPPED LUXURY

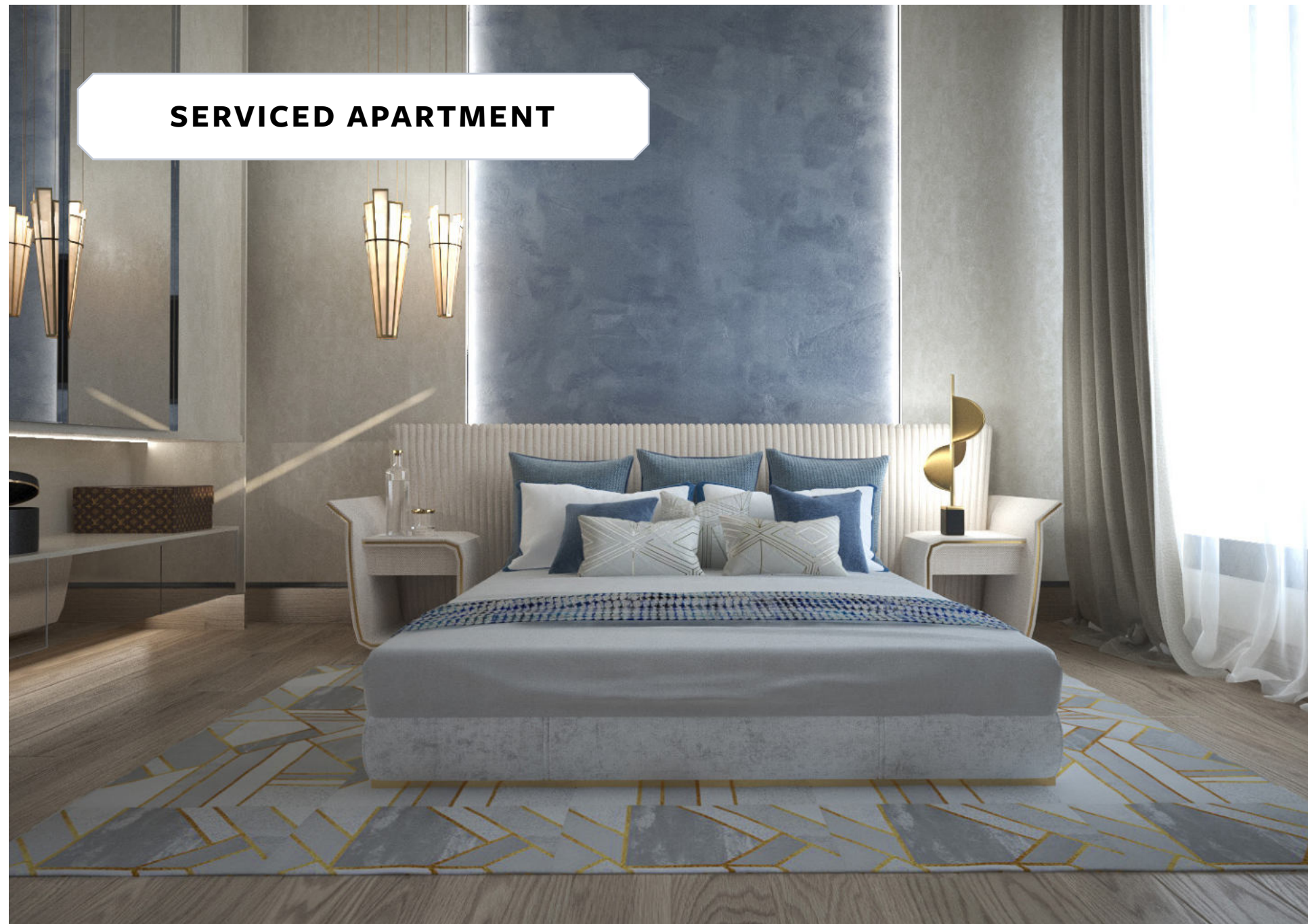
Possibly the best part of your stay at The House Hotel & Residence - Royale is that your fully furnished serviced apartment is an exclusive retreat of utmost privacy, while offering A to Z luxury on par with elegant hotels however long you wish to stay. Spacious, sleek and well-equipped with state-of-the-art kitchens and air conditioning systems, your apartment embodies excellence based on The House Hotel standards while enjoying full access to 24/7 housekeeping and concierge services, in addition to placing your life at the intersection of exclusive tranquility and non-stop action.



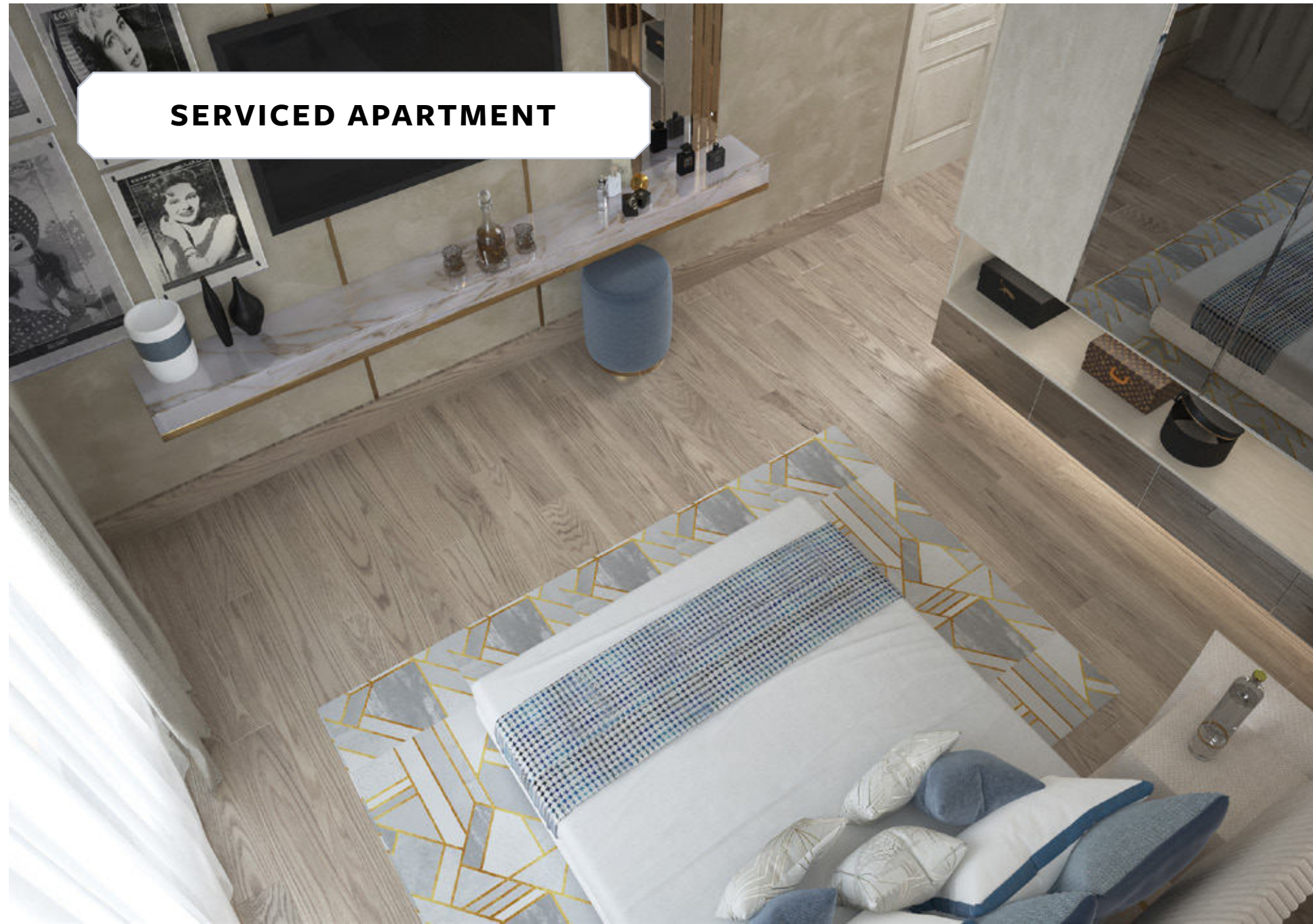
SERVICED APARTMENT



SERVICED APARTMENT



SERVICED APARTMENT



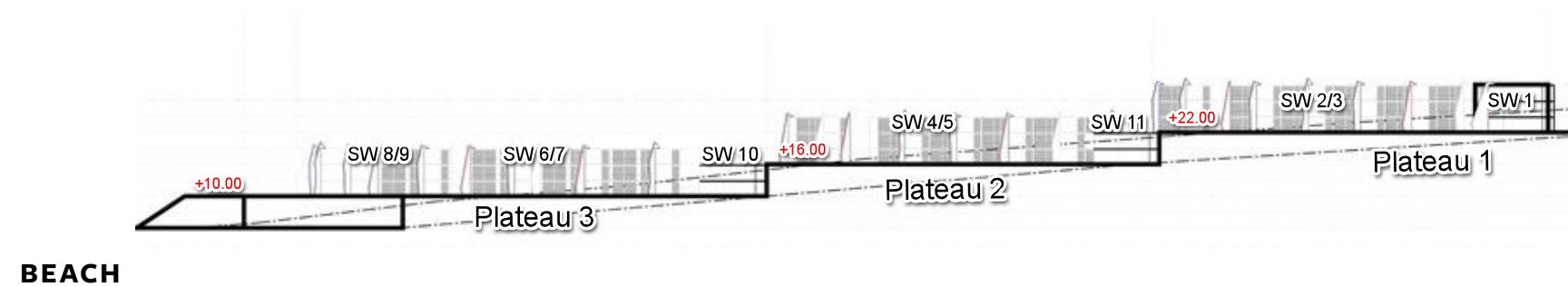
SERVICED APARTMENT





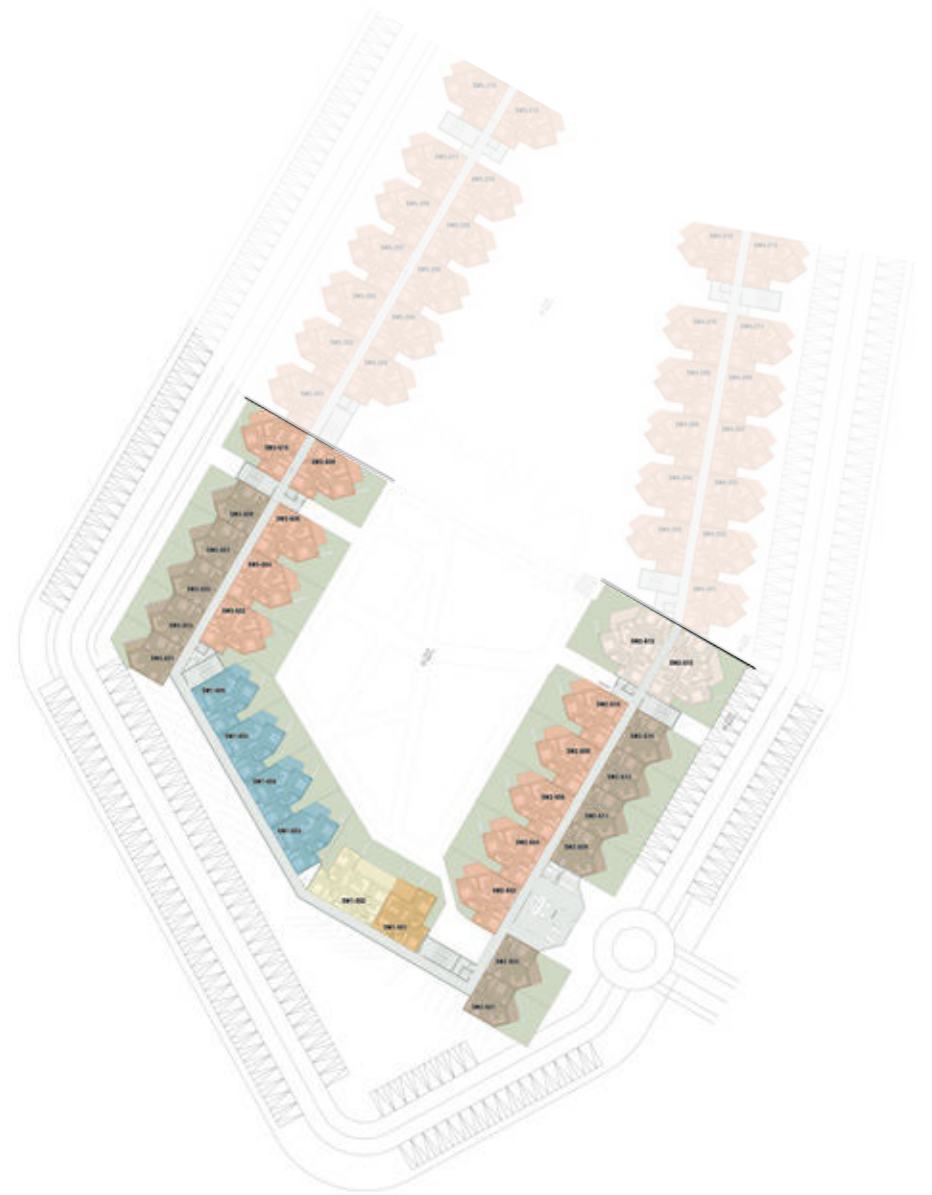
FLOOR PLANS

**SECTION ELEVATION
SIDE VIEW**



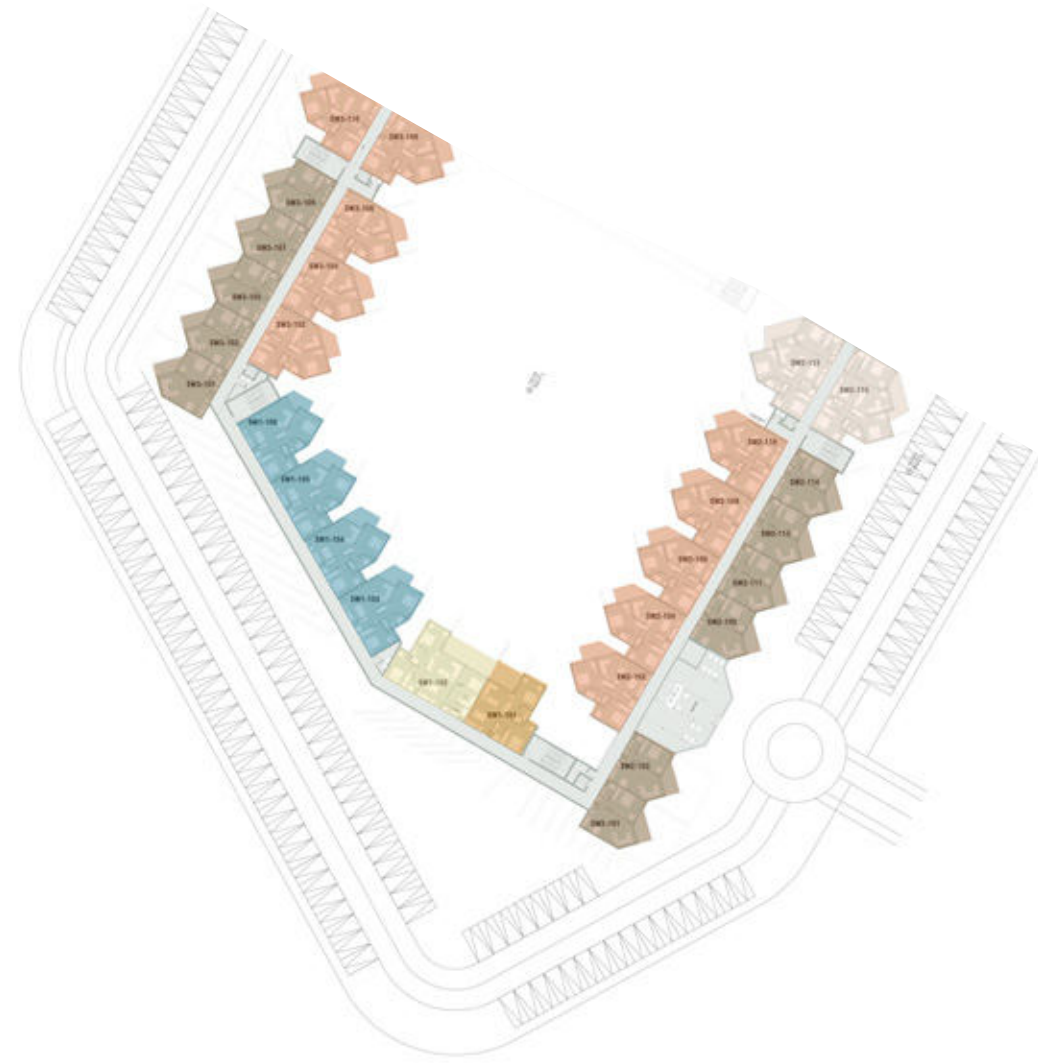
PLATEAU 1 GROUND FLOOR

- Type 01
- Type 02
- Type 03
- Type 04
- Type 05
- Type 06



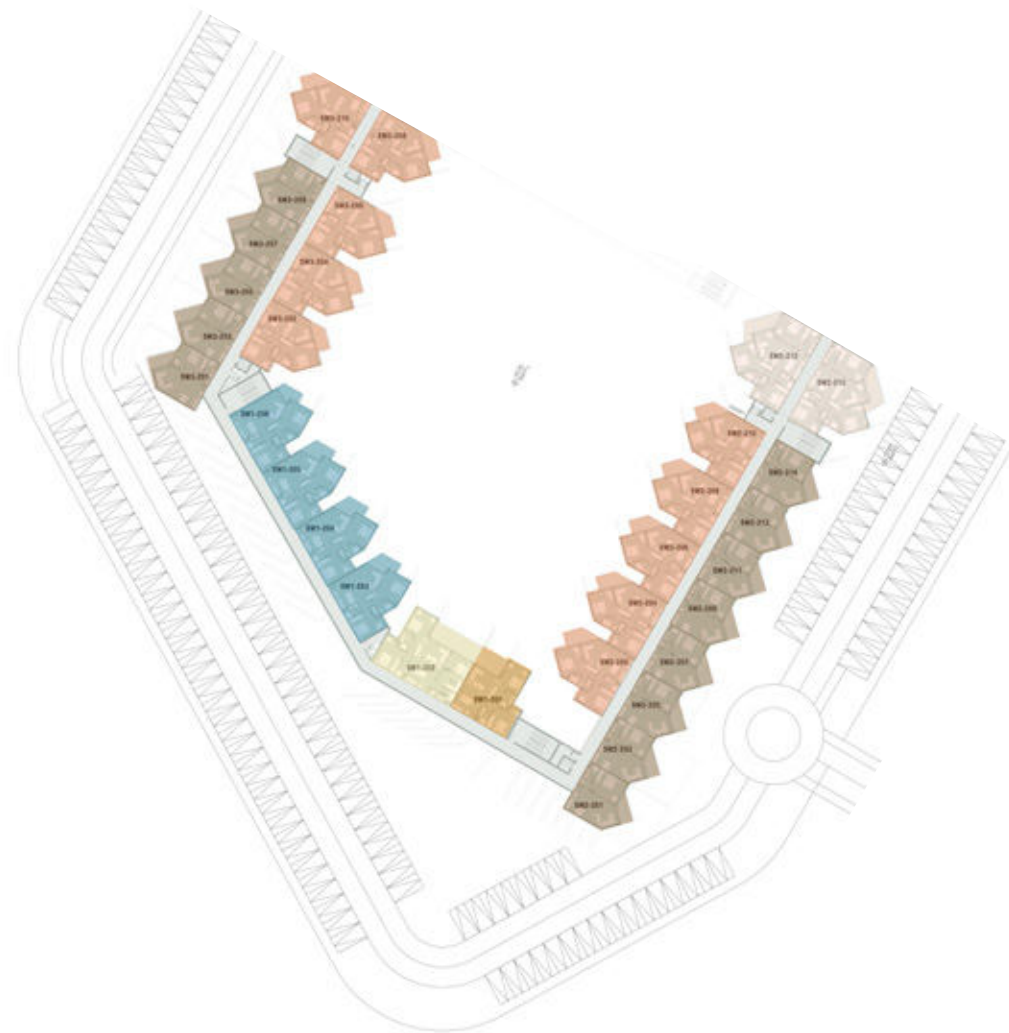
PLATEAU 1 FIRST FLOOR

- Type 01
- Type 02
- Type 03
- Type 04
- Type 05
- Type 06



PLATEAU 1 SECOND FLOOR

- Type 01
- Type 02
- Type 03
- Type 04
- Type 05
- Type 06



PLATEAU 2 GROUND FLOOR

- Type 02
- Type 06
- Type 07
- Type 08



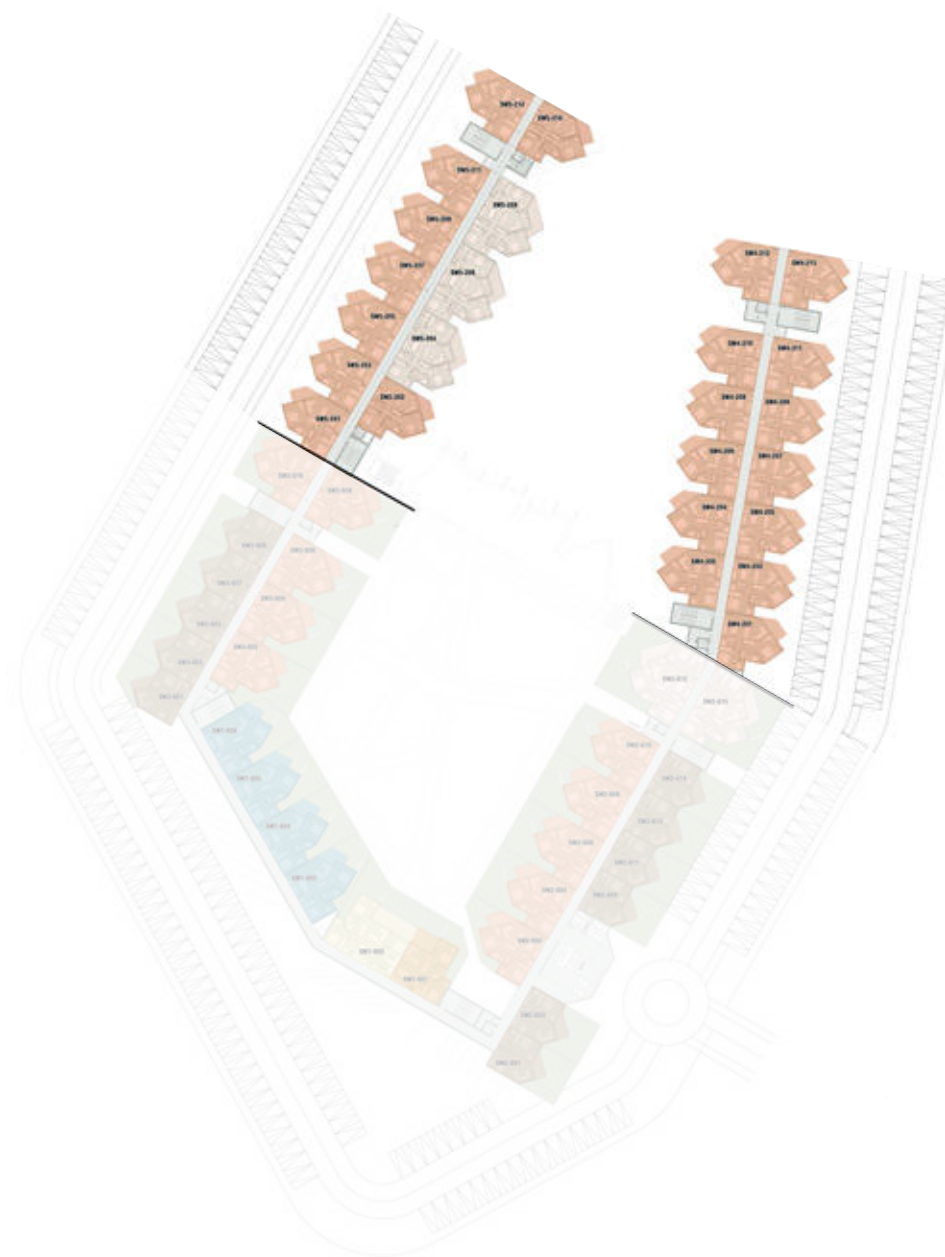
PLATEAU 2 FIRST FLOOR

- Type 02
- Type 06
- Type 07
- Type 08



PLATEAU 2 SECOND FLOOR

- Type 02
- Type 06



1 BEDROOM

TYPE O1

ANGLE	45°
Reception + Kitchenette	4 X 8.4
Bedroom	3.6 x 4.6
Bathroom	2.5 x 1.7
Terrace	1.8 x 3.6

Gross Area 80m²



2 BEDROOMS

TYPE O2

ANGLE	45°
Reception + Kitchenette	8.15 x 4
Master Bedroom	3.9 x 3.6
Master Bathroom	3.25 x 1.55
Dressing	1.7 x 2.5
Bedroom	3.6 x 4.6
Bathroom	1.7 x 2.5
Terrace	1.95 x 4.9

Gross Area 110m²



2 BEDROOMS

TYPE 03

ANGLE	30°
Reception + Kitchenette	8 x 4
Master Bedroom	3.9 x 3.6
Master Bathroom	3 x 1.55
Dressing	2.2 x 1.7
Bedroom	3.6 x 4.6
Bathroom	2.5 x 1.7
Terrace	2.4 x 4.5

Gross Area 110m²

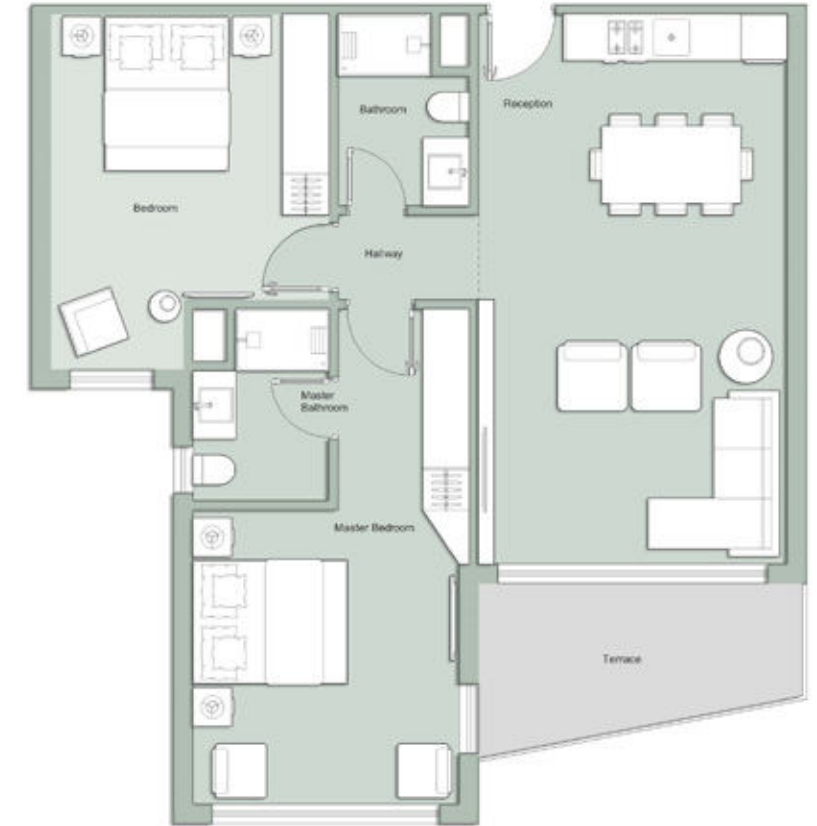


2 BEDROOMS

TYPE 04

ANGLE	90°
Reception + Kitchenette	7.1 x 4
Master Bedroom	3.8 x 3.45
Master Bathroom	2.5 x 1.75
Dressing	2.6 x 1.7
Bedroom	3.6 x 4.6
Bathroom	1.7 x 2.5
Terrace	4.2 x 2.2

Gross Area 110m²



3 BEDROOMS

TYPE 05

ANGLE	90°
Reception + Kitchenette	7.2 x 4
Master Bedroom	3.8 x 3.0
Master Bathroom	2.5 x 1.8
Dressing	1.7 x 3.2
Master Bedroom 2	5 x 3.6
Master Bathroom 2	2 x 2.4
Bedroom	3.6 x 4.7
Bathroom	2.5 x 1.7
Terrace	7.7 x 2.65

Gross Area 150m²



3 BEDROOMS

TYPE 06

ANGLE	45°
Reception + Kitchenette	8.9 x 4
Master Bedroom	3.9 x 3.6
Master Bathroom	3.2 x 1.55
Dressing	2.5 x 1.7
Master Bedroom 2	3.6 x 4.7
Master Bathroom 2	2.5 x 1.7
Bedroom	4.6 x 3.6
Bathroom	2.5 x 1.7
Terrace	3 x 5.8

Gross Area 150m²



3 BEDROOMS

TYPE 07

ANGLE	30°
Reception + Kitchenette	6 x 7.5
Bedroom	4.6 x 3.6
Bathroom	2.5 x 1.7
Terrace	4.1 x 2.0
Private living	4 x 3.5
Master Bedroom	3.6 x 3.9
Master Bathroom	1.5 x 3.3
Dressing	2 x 1.8
Bedroom 2	4.6 x 3.6
Bathroom 2	2.5 x 1.7
Terrace	4.1 x 2.0

Gross Area 220m²



GROUND FLOOR



FIRST FLOOR

3 BEDROOMS

TYPE 08

ANGLE	90°
Reception + Kitchenette	6.4 x 7.5
Bedroom	4.6 x 3.6
Bathroom	2.5 x 1.7
Terrace	4.1 x 2.8
Private living	3.3 x 3.4
Master Bedroom	5.5 x 4.1
Master Bathroom	2.5 x 1.7
Dressing	2 x 1.8
Bedroom 2	4.6 x 3.6
Bathroom 2	2.5 x 1.7

Gross Area 220m²



GROUND FLOOR



FIRST FLOOR

WHEN WORLD-CLASS AMENITIES MEET IMPECCABLE SERVICE

The House Hotel & Residence - Royale's state-of-the-art spa is a dedicated holistic oasis of rejuvenation, and calm. Drift away to a magical place with signature treatments that guarantee to leave your body, and soul revitalized. For the more energetic, the hotel's cutting-edge gym invites residents to work out in a professional environment, inviting elevating landscapes indoors.

Wherever the mood takes you, the hotel's world-class restaurants, and gourmet cafe and bar lounge guarantee to transport you to a multi-sensory experience drawing on original specialities, as well as stunning scenery whether it is breakfast, lunch, cocktails or simply a memorable dinner by the beach.

THEHOUSE | HOTEL & RESIDENCE ROYALE SERVICES



THE HOUSE HOTEL



MAIN SPA



GYMNASIUM



RESTAURANTS AND CAFES



BANQUETING FACILITY



BUSINESS HUB



VAST SWIMMING POOLS



CONCIERGE SERVICES



HOUSEKEEPING SERVICES



HOME AUTOMATION OPTION



FINE DINING EXPERIENCE



PRIVATE ACCESS BEACH



PRIVATE GATED ZONE



**FULLY FINISHED AND FURNISHED
BY THH STANDARDS**

PARTNERING WITH THE BEST

Kerten Hospitality is a division of Ireland-based Kerten, a leading investment firm dedicated to creating value and profitable growth using their expertise, commitment and innovation with ongoing investments across 20 different business sectors in 17 different countries. Kerten Hospitality focuses on operating mixed-use projects: branded residences, serviced apartments, luxury hotels, serviced office and business clubs, gourmet burgers and a rich portfolio of F&B concepts.

Kerten Hospitality has a dynamic team who are innovation disruptors, rebel hoteliers and food enthusiasts with hospitality pedigrees from well-known brands based in the GCC and Europe. Hospitality brands created by Kerten Hospitality include The House Hotel, The House Residence, Cloud7 Hotel & Residence, Ouspace, a serviced office and business club that provides the possibility for solo working and collaboration, and its tech-driven gourmet burger concept, Frikadell - with more brands in the pipeline.



All plans, materials, dimensions or drawings herein contained are approximate and not to scale. The developer reserves the right to apply further revisions and/or changes to any such plans, materials, dimensions and/or drawings. This document contains proprietary information that cannot be reproduced or divulged, in whole or in part, without written authorization from the developer.

